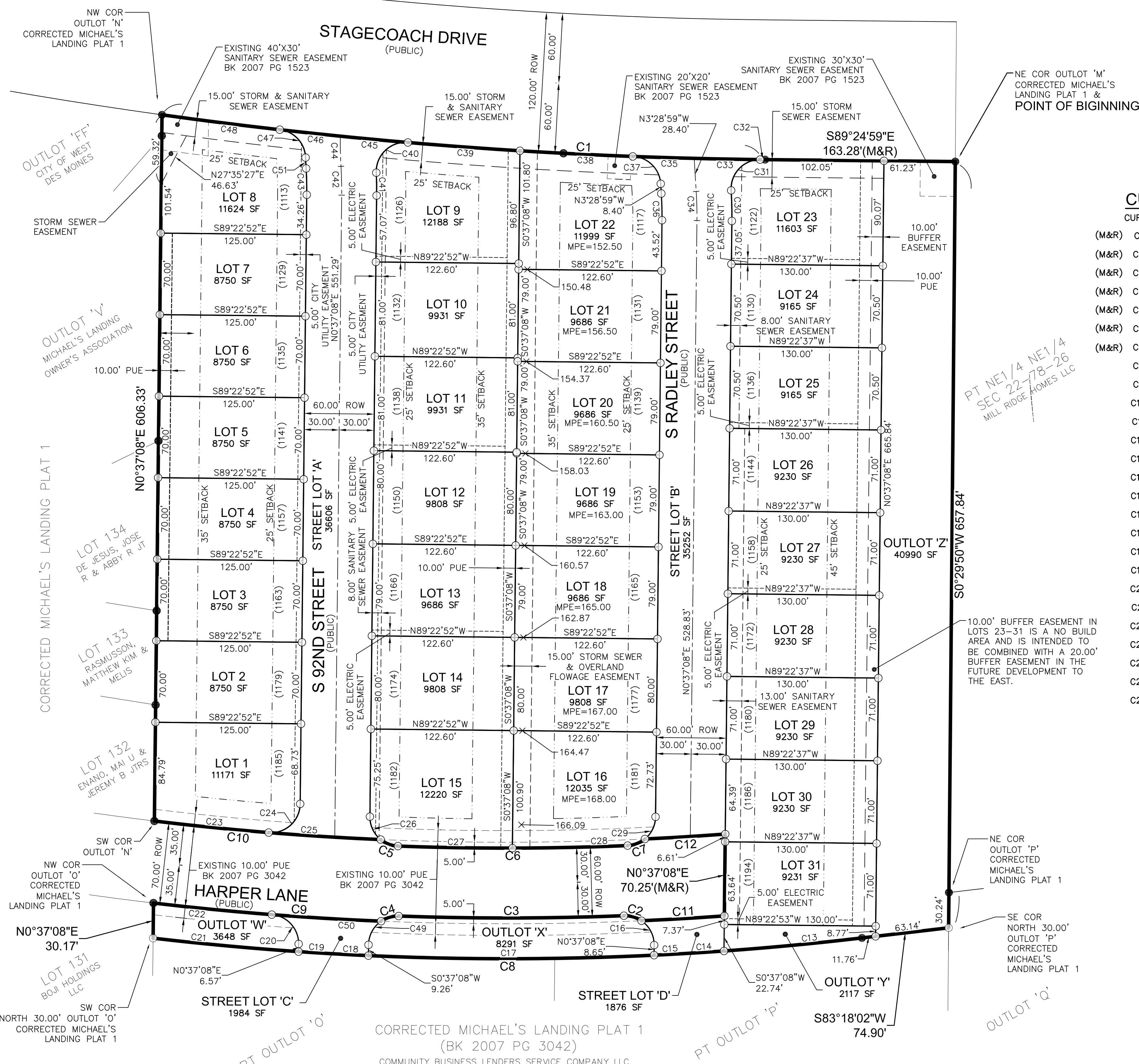


MILL RIDGE PLAT 1

FINAL PLAT

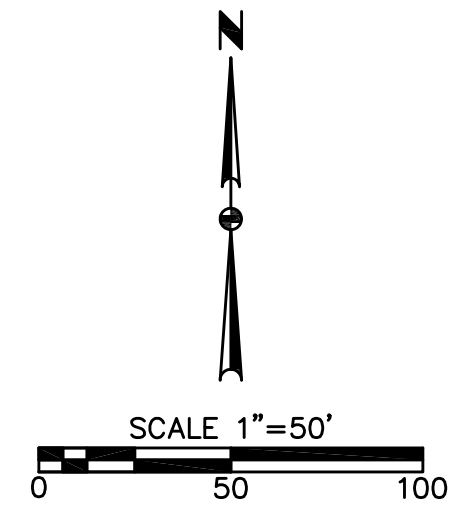


CURVE DATA:

CURVE	DELTA	RADIUS	LENGTH	BEARING	CHORD	CURVE	DELTA	RADIUS	LENGTH	BEARING	CHORD
(M&R) C1	7°19'55"	4060.00'	519.55'	S85°45'01"E	519.20'	C27	2°14'03"	2520.00'	98.27'	S88°59'44"E	98.26'
(M&R) C2	36°42'17"	25.00'	16.02'	S73°53'03"E	15.74'	C28	2°15'00"	2520.00'	98.96'	N88°45'45"E	98.95'
(M&R) C3	4°17'41"	2580.00'	193.39'	N89°54'39"E	193.35'	C29	49°58'36"	25.00'	21.81'	N25°36'26"E	21.12'
(M&R) C4	36°42'17"	25.00'	16.02'	N73°42'21"E	15.74'	C30	3°57'27"	380.00'	26.25'	S1°21'35"E	26.24'
(M&R) C5	37°02'30"	25.00'	16.16'	N69°21'27"W	15.88'	C31	93°03'39"	25.00'	40.61'	S43°11'31"W	36.29'
(M&R) C6	4°29'03"	2520.00'	197.23'	S89°52'46"W	197.18'	C32	0°03'39"	4060.00'	4.31'	N89°23'10"W	4.31'
(M&R) C7	37°02'30"	25.00'	16.16'	S69°07'00"W	15.88'	C33	0°47'54"	4060.00'	56.57'	S88°57'23"E	56.57'
C8	13°21'52"	2615.00'	609.96'	S89°58'58"W	608.58'	C34	4°06'07"	350.00'	25.06'	N1°25'56"W	25.05'
C9	4°20'46"	2585.00'	196.08'	S85°26'15"E	196.03'	C35	0°44'40"	4060.00'	52.76'	S88°11'06"E	52.76'
C10	4°26'30"	2515.00'	194.96'	N85°18'52"W	194.91'	C36	4°06'07"	320.00'	22.91'	N1°25'56"W	22.91'
C11	1°34'45"	2585.00'	71.25'	N86°38'34"E	71.25'	C37	84°19'46"	25.00'	36.80'	N45°38'53"W	33.56'
C12	1°34'27"	2515.00'	69.10'	S86°30'26"W	69.10'	C38	1°22'08"	4060.00'	97.01'	N87°07'42"W	97.01'
C13	2°36'26"	2615.00'	119.00'	N84°36'15"E	118.99'	C39	1°21'41"	4060.00'	96.46'	N85°45'47"W	96.46'
C14	0°39'33"	2615.00'	30.09'	N86°14'15"E	30.09'	C40	97°15'22"	25.00'	42.44'	S46°17'22"W	37.52'
C15	0°39'31"	2615.00'	30.06'	N86°53'47"E	30.06'	C41	2°57'27"	380.00'	19.61'	S0°51'35"E	19.61'
C16	92°51'20"	25.00'	40.52'	N45°48'32"W	36.23'	C42	4°02'54"	350.00'	24.73'	N1°24'19"W	24.72'
C17	5°22'30"	2615.00'	245.31'	N89°54'48"E	245.22'	C43	4°02'54"	320.00'	22.61'	N1°24'19"W	22.61'
C18	0°39'28"	2615.00'	30.02'	S87°04'13"E	30.02'	C44	4°14'37"	350.00'	25.92'	N1°18'28"W	25.92'
C19	0°39'30"	2615.00'	30.04'	S86°24'44"E	30.04'	C45	0°49'21"	4060.00'	58.28'	S84°40'16"E	58.28'
C20	86°08'45"	25.00'	37.59'	N42°27'15"W	34.15'	C46	0°44'15"	4060.00'	52.26'	S83°53'29"E	52.26'
C21	2°44'54"	2615.00'	125.43'	S84°42'33"E	125.42'	C47	81°29'53"	25.00'	35.56'	N42°46'24"W	32.64'
C22	2°15'45"	2585.00'	102.07'	N84°23'45"W	102.07'	C48	1°26'17"	4060.00'	101.91'	N82°48'12"W	101.91'
C23	2°14'50"	2515.00'	98.65'	S84°13'02"E	98.64'	C49	91°26'21"	25.00'	39.90'	S46°20'19"W	35.80'
C24	94°02'24"	25.00'	41.03'	N47°38'20"E	36.58'	C50	2°05'01"	2585.00'	94.00'	S86°34'08"E	94.00'
C25	2°11'38"	2515.00'	96.31'	S86°26'18"E	96.30'	C51	1°24'18"	380.00'	9.32'	N2°43'37"W	9.32'
C26	51°27'20"	25.00'	22.45'	S25°06'32"E	21.70'						

LEGEND:

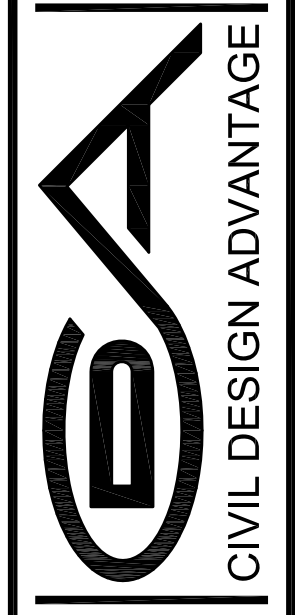
	FOUND	SET
SECTION CORNER AS NOTED	▲	△
1/2" REBAR, YELLOW CAP #15980 (UNLESS OTHERWISE NOTED)	●	○
PLATTED BEARING & DISTANCE	P	
MEASURED BEARING & DISTANCE	M	
RECORDED BEARING & DISTANCE	R	
DEEDED BEARING & DISTANCE	D	
MINIMUM PROTECTION ELEVATION	MPE	
PUBLIC UTILITY EASEMENT	P.U.E.	
CENTERLINE	---	
SECTION LINE	---	
EASEMENT LINE	---	



DATE: 8/21/2016 8:23 AM
 DRAWN BY: J. BOJ
 CHECKED BY: J. BOJ
 FILE: H:\2013\30444\FINAL PLAT 1.DWG
 PLOTTED BY: J. BOJ

REVISIONS	DATE

3405 S.E. CROSSROADS DRIVE, SUITE G
 GRIMES, IOWA 50111
 PHONE: (515) 369-4400 FAX: (515) 369-4410
 TECH: ENGINEER:



WEST DES MOINES, IOWA

MILL RIDGE PLAT 1

FINAL PLAT